



# Longfield Solar Farm

PINS Ref: EN010118

Consultation Report Appendices

Appendices D-1 to D-3

Document Reference: EN010118/APP/5.5

Revision 1

February 2022

Longfield Solar Energy Farm Ltd

APFP Regulation 5(2)(q)

Planning Act 2008

Infrastructure Planning (Applications: Prescribed Forms and Procedure)  
Regulations 2009

## Table of Contents

<b>Appendix D-1: Final SoCC .....</b>	<b>1</b>
<b>Appendix D-2: Copies of notices of availability of SoCC published under S47 of PA 2008.....</b>	<b>24</b>
<b>Appendix D-3: Compliance with SoCC.....</b>	<b>30</b>

# Appendix D-1: Final SoCC



STATEMENT OF COMMUNITY  
CONSULTATION  
20 May 2021



## Contents

1. Introduction .....	2
2 The proposed Longfield Solar Farm .....	5
3 Developing our approach to consultation .....	7
4 Consulting the community .....	9
5. Consultation arrangements .....	21

---

Alexander House - 1 Mandarin Road - Rainton Bridge Business Park - Houghton le Spring -DH4 5RA  
Registered Company No. 11618210 - longfieldsolarfarm.co.uk



## 1. Introduction

1.0.1 Longfield Solar Energy Farm Ltd is inviting feedback from the local community on its proposals for Longfield Solar Farm as part of a public consultation in line with the requirements of the Planning Act 2008.

### 1.1 What is this document?

1.1.1 This document, known as a Statement of Community Consultation ("SoCC"), sets out how we plan to consult with the local community. Feedback from this round of consultation will inform the final planning submission. It includes:

- A description of the planning process we must follow
- An outline of our proposals
- How we have developed our approach to consultation
- How we will be consulting the local community
- How we will publicise the consultation
- The consultation arrangements
- What we will do with feedback from the consultation
- Next steps and further information

### 1.2 Why are we publishing this document?

1.2.1 The proposed Longfield Solar Farm is classified as a Nationally Significant Infrastructure Project ("NSIP") under the Planning Act 2008. This means that, unlike planning applications, which are determined by local planning authorities, we must apply to the Secretary of State for Business, Energy and Industrial Strategy ("BEIS") for a Development Consent Order ("DCO") for our proposals.

1.2.2 Part of this process requires us to publish a statement of how we will consult with the local community – known as a SoCC. The consultation is an opportunity to influence our proposals before we submit our DCO application. We very much want feedback from the local community on our proposals as part of it.



## 1.4 The planning process

1.4.1 We are developing the proposed Longfield Solar Farm under the Planning Act 2008. This is because its proposed generating capacity exceeds 50 megawatts ("MW"), which means that, under the Planning Act 2008, Longfield Solar Farm constitutes a NSIP requiring a DCO.

1.4.2 Unlike planning applications, which are considered by local authorities, DCO applications are made to the Planning Inspectorate ("PINS"). This independent body administers the application process on behalf of the relevant Secretary of State. In this case, the appropriate government department is the Department for BEIS. Further information on the DCO application process can be obtained from PINS Advice Note 8: Overview of the nationally significant infrastructure planning process for members of the public and others. This is available on the PINS website at the following link: <https://infrastructure.planninginspectorate.gov.uk/wp-content/uploads/2013/04/Advice-note-8.0.pdf>

1.4.3 Figure 1 on page 4 of this document shows each stage of the planning process for NSIPs. We anticipate submitting our application in the final quarter of 2021.

1.4.4 There are a number of other NSIPs currently planned in Essex. Locally, these include the proposed A12 Chelmsford to A120 Widening Scheme. We are actively considering potential interactions with other NSIPs as we develop our proposals.

## 1.5 The Planning Act 2008 and consultation

1.5.1 DCOs are governed by a fixed, statutory process which requires us to consult with persons with an interest in the proposed land and certain bodies as prescribed under section 42 of the Planning Act 2008; the local community under section 47 of the Planning Act 2008; and to publicise the proposals locally and nationally under section 48 of the Planning Act 2008 and regulation 13 of the Infrastructure Planning (Environmental Impact Assessment) Regulations 2017 ("EIA Regulations"). It also provides a fixed role as consultees for those local authorities which host the development and means we will be following a well-established and clear process to develop our proposals.

1.5.2 We are at the stage in developing our proposals where we will formally consult to meet this requirement – this is known as a statutory consultation. We will use the feedback that we receive during the statutory consultation to help us develop our final proposals for Longfield Solar Farm before submitting our DCO application.

1.5.3 As part of our DCO application, we will submit a Consultation Report detailing our approach to consultation, the feedback that we received during the statutory consultation, and how we have had regard to it. When considering our DCO application, the Secretary of State must consider whether the consultation that we have undertaken has been adequate.



## 1.6. Environmental Impact Assessment

1.6.1 For the proposed Longfield Solar Farm, we are required to carry out an Environmental Impact Assessment ("EIA") of our proposals as part of the planning process. In legal terms, this means the proposed scheme is considered to be 'EIA development' for the purposes of the EIA Regulations.

1.6.2 This means we must assess the likely significant environmental effects of our proposals and where appropriate describe mitigation that is proposed to avoid, prevent, reduce or, if possible, offset any significant adverse effects. We will report on this process in a document called an Environmental Statement ("ES") when we submit our DCO application.

1.6.3 At this consultation stage, we will be sharing and seeking feedback on the preliminary results of our assessments. We will do so in a document called a Preliminary Environmental Information Report ("PEIR").

## 1.7 More information

1.7.1 You can find more information about the Planning Act 2008, PINS and its role and how to participate in the DCO process on the PINS National Infrastructure Planning website - <https://infrastructure.planninginspectorate.gov.uk/>, or by calling PINS on 0303 444 5000.



Figure 1: The planning process for NSIPs

Alexander House - 1 Mandarin Road - Rainton Bridge Business Park - Houghton le Spring -DH4 5RA  
 Registered Company No. 11618210 - longfieldsolarfarm.co.uk



## 2 The proposed Longfield Solar Farm

### 2.1 About us

2.1.1 Longfield Solar Energy Farm Limited is a joint venture between two companies with a long history in helping meet the country's need for renewable energy.

2.1.2 EDF Renewables has more than 25 years' worth of experience in delivering renewable energy projects in more than 20 countries around the world. In the UK, it provides much needed new affordable low carbon energy through 37 wind farms and one of the UK's largest battery storage units (together totalling almost 1GW). It has a portfolio of rooftop solar and grid scale solar energy generation in development.

2.1.3 Padero Solar has helped to develop more than 25 solar farms in the UK and this provides over 390MW of renewable energy. Padero Solar is part of a group of three companies. These include PS Renewables, which is behind a number of solar projects, and PSH Operations, an Operations & Maintenance business managing over 1.3GW of solar farm assets in the UK.

2.1.4. You can find out more at their websites: <https://www.edf-re.uk/> and <http://paderosolar.com/>

### 2.2 Longfield Solar Farm

2.2.1 Longfield Solar Farm is a proposed new solar energy farm, co-located with battery storage. The proposals include grid infrastructure to connect Longfield Solar Farm to the National Grid and any necessary and appropriate environmental mitigation. It is located in the local authority areas of Braintree District Council, Chelmsford City Council and Essex County Council.

2.2.2 We will also seek development consent for the infrastructure needed to build and maintain Longfield Solar Farm, such as construction compounds and site offices. We will apply in the DCO application for ancillary powers such as road/traffic management powers required in construction and, potentially, compulsory acquisition powers for land and/or rights.

2.2.3 We have secured a grid connection agreement for the scheme, which would allow us to export or import up to 500MW of electricity to and from the National Grid.

2.2.4 Further details of the proposed Longfield Solar Farm will be included in materials published as part of the consultation. Details of the materials that we will publish are set out in the 'Consulting the community' section below.

---

Alexander House - 1 Mandarin Road - Rainton Bridge Business Park - Houghton le Spring -DH4 5RA  
Registered Company No. 11818210 - [longfieldsolarfarm.co.uk](http://longfieldsolarfarm.co.uk)



Figure 2: Scheme boundary (shown in red)



Alexander House - 1 Mandarin Road - Rainton Bridge Business Park - Houghton le Spring -DH4 5RA  
Registered Company No. 11818210 - longfieldsolarfarm.co.uk



### 3 Developing our approach to consultation

3.1 We have undertaken early engagement with stakeholders to develop our approach to community consultation.

3.2 This has included meeting with officers and members at the local authorities that the proposed Longfield Solar Farm is located within, relevant statutory advisers, potentially affected land interests, parish councils, and relevant members of Parliament. We also conducted a period of non-statutory consultation between 2 November 2020 and 14 December 2020.

3.3 Due to the COVID 19 pandemic, the consultation took place remotely. We used a range of techniques to ensure that the community could find out more and respond; these included issuing a booklet and consultation questionnaire to local addresses by post, a virtual exhibition, webinars and one-to-one phone meetings. We considered feedback from the host local authorities in developing our approach to non-statutory consultation. Through the non-statutory consultation, we invited feedback on our early proposals for Longfield Solar Farm, our approach to environmental impact assessment, and our approach to consultation.

3.4 We are grateful to everyone who took part in the non-statutory consultation. We received more than 240 responses overall, both through the consultation questionnaire issued by post and online. The consultation was a useful opportunity to develop remote consultation techniques such as webinars, one-to-one phone meetings and virtual exhibitions which we are using as part of this consultation. Materials from the non-statutory consultation will continue to be available at our website, [www.longfieldsolarfarm.co.uk](http://www.longfieldsolarfarm.co.uk), during the current round of consultation.

3.5 We are required by section 47(2) of the Planning Act 2008 to consult with host authorities as defined by section 43(1) of the Planning Act 2008 on the development of this SoCC. We consulted these authorities between 10 March and 9 April 2021. Table 1 below summarises feedback from this consultation and our responses to it.

Table 1: summary of feedback from SoCC consultation

Feedback	Our response
The start of the consultation period should be delayed until after the local elections on 6 May 2021.	We have amended the SoCC so that the consultation will start no earlier than 20 May 2021.
The Introduction should set out the context for development and the planning process clearly, including how the project relates to other NSIPs.	We have updated the Introduction in line with this advice.
Electronic mapping should be clear and allow readers to enlarge it, as well as show local context such as settlement names.	Figures 2 and 3 have been updated in response to this comment.

Alexander House - 1 Mandarin Road - Rainton Bridge Business Park - Houghton le Spring -DH4 5RA  
Registered Company No. 11618210 - [longfieldsolarfarm.co.uk](http://longfieldsolarfarm.co.uk)



Feedback	Our response
The SoCC should set out more detail on how the non-statutory consultation informed the current round of consultation.	We have added further detail on this point in section 3.
The SoCC should provide more detail on how the consultation will engage with seldom heard groups.	We have added further detail on the way the consultation will engage with seldom heard groups. This includes adding a list of consultees and further detail on how consultation materials will be accessible.
Hard copies of documents should be sent to parish councils and district councils in Zone 1 so that they are available locally.	Subject to Government guidance on COVID 19, we hope to make documents available on deposit in public buildings in the local area. We have included further details of this in sections 4 and 5.
Consultees should be able to comment on socio-economic and cumulative impacts from development, proposed mitigation, and ways to maximise the benefits of development.	These are included in the scope of consultation set out in section 4.
The SoCC should state that consultation materials will make clear which aspects of the development proposals may be fixed and which can be influenced.	This is set out in section 4.
Subject to Government guidance on COVID 19, the project should consider use of static displays at local shopping and community centres.	We will consider the use of static displays at relevant local venues if permitted by Government guidance on COVID 19.
The use of an interactive map on the website, referencing points of interests and tags to more information, would help convey technical information in a more user-friendly way.	We are producing a 3D model and flythrough as part of the consultation. This will help provide technical information in a user-friendly way as referenced in the comment.

---

Alexander House - 1 Mandarin Road - Rainton Bridge Business Park - Houghton le Spring -DH4 5RA  
 Registered Company No. 11618210 - longfieldsolarfarm.co.uk



## 4 Consulting the community

4.1 We are inviting the community living in the vicinity of the proposed Longfield Solar Farm to take part in the statutory consultation and provide feedback on our developed proposals. This is to ensure that those people potentially affected by our proposals have the opportunity to understand them, provide their views and further influence the scheme's design.

### 4.2 Consulting during the COVID 19 pandemic

4.2.1 We are consulting at a time when the ongoing COVID 19 pandemic means there are restrictions on holding public meetings and events. While the Government has now announced a roadmap for ending the current restrictions, the dates in this are not fixed. The timing of the end of restrictions will depend on four tests set by the Government in its *COVID-19 Response: Spring 2021*.

4.2.2 We are aware of how important it is to make sure that anyone in the community who wants to find out more or share their views on the proposals can do so, as well as to provide certainty about how we will consult. We have developed a consultation programme designed to allow people from across the community to respond which is also compatible with different levels of social distancing requirements. As such, this document sets out a variety of different ways for local people to find out more information and provide feedback.

4.2.3 In preparing our approach to consultation, we have considered Government guidance on COVID 19: [www.gov.uk/coronavirus](http://www.gov.uk/coronavirus). We have also considered advice from the local authorities where the proposed Longfield Solar Farm is located, the results of non-statutory consultation, and best practice guidance such as the National Infrastructure Planning Association's paper *Development Consent Orders and the Coronavirus Pandemic* (21 April 2020).

4.2.4 It is possible that the Government's advice regarding the COVID 19 pandemic may change during the consultation on our proposals or between the publication of this document and the beginning of the consultation. We have therefore set out below how we will respond to any changes in Government guidance on COVID 19 which take place during the consultation period.

### 4.3 Timing

4.3.1 To allow for the local government elections on 6 May 2021, the consultation will start no earlier than 20 May 2021. It will last for a minimum of six weeks from the start of the consultation period. The final consultation dates will be included in the consultation materials.

### 4.4 What will be consulted on?

4.4.1 During the statutory consultation, we will be asking for views on:

- The proposed Longfield Solar Farm
- The short term and long-term impacts of the proposed Longfield Solar Farm including:
  - Construction impacts

---

Alexander House - 1 Mandarin Road - Rainton Bridge Business Park - Houghton le Spring -DH4 5RA  
Registered Company No. 11618210 - longfieldsolarfarm.co.uk





- Environmental impacts
- Operational impacts
- Impacts from decommissioning
- Other impacts in this period, such as socioeconomic and cumulative impacts.
- Proposed mitigation of these impacts
- The contribution that Longfield Solar Farm could make to the local community
- The PEIR

## 4.5 Who will we consult?

4.5.1 We will consult widely in accordance with this SoCC and encourage participation in the consultation from any person or group who may be directly impacted by the proposed Longfield Solar Farm. We have defined a series of 'zones of consultation' for the purpose of consulting with the local community under section 47 of the Planning Act 2008.

4.5.2 These recognise the fact that levels of potential impact and interest are likely to vary with geography and inform the techniques we will use to consult. These zones are set out in Table 2.

**Table 2: zones of consultation**

Zone	Parameters
Zone 1	<p>Any person or group likely to be directly impacted by the proposed Longfield Solar Farm by virtue of their living or working in proximity to the site.</p> <p>This zone is defined by the boundaries of the parishes of Boreham, Fairstead, Great and Little Leighs, Hatfield Peverel, Little Waltham and Terling as shown in Figure 3 below.</p>
Zone 2	<p>People living and working in the host local authority areas of Braintree District Council, Chelmsford City Council and Essex County Council outside of consultation zone 1.</p>
Zone 3	<p>Neighbouring districts within the administrative areas of:</p> <ul style="list-style-type: none"> <li>• Colchester Borough Council</li> <li>• Maldon District Council</li> <li>• Rochford District Council</li> <li>• Basildon Borough Council</li> <li>• Brentwood Borough Council</li> <li>• Epping Forest District Council</li> <li>• Uttlesford District Council</li> </ul>

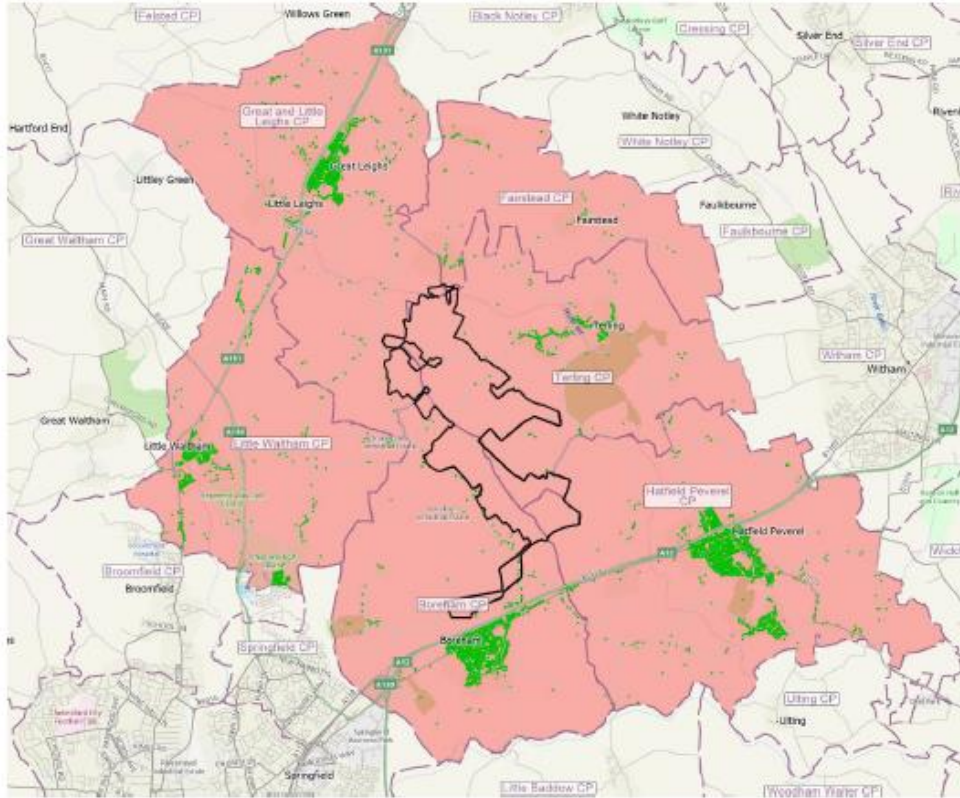
Alexander House - 1 Mandarin Road - Rainton Bridge Business Park - Houghton le Spring -DH4 5RA  
 Registered Company No. 11818210 - longfieldsolarfarm.co.uk



Zone	Parameters
	<ul style="list-style-type: none"> <li>• South Cambridgeshire District Council</li> <li>• West Suffolk Council</li> <li>• Babergh District Council</li> <li>• Mid Suffolk District Council</li> </ul> <p>Neighbouring counties and unitary authorities within the administrative areas of:</p> <ul style="list-style-type: none"> <li>• Suffolk County Council</li> <li>• Hertfordshire County Council</li> <li>• Cambridgeshire County Council</li> <li>• London Borough of Enfield</li> <li>• London Borough of Waltham Forest</li> <li>• London Borough of Redbridge</li> <li>• London Borough of Havering</li> <li>• Medway Council</li> <li>• Southend on Sea Borough Council</li> <li>• Thurrock Council</li> </ul>

---

Alexander House - 1 Mandarin Road - Rainton Bridge Business Park - Houghton le Spring -DH4 5RA  
 Registered Company No. 11618210 - longfieldsolarfarm.co.uk



**Figure 3: Consultation zone 1. The site boundary is shown in black.**

---

Alexander House - 1 Mandarin Road - Rainton Bridge Business Park - Houghton le Spring -DH4 5RA  
Registered Company No. 11618210 - longfieldsolarfarm.co.uk



4.5.3 We will also consult and continue our engagement with a range of statutory consultees as set out by section 42 and section 48 of the Planning Act 2008 and regulation 13 of the EIA Regulations, and additional organisations that we recognise to have an interest in the proposed Longfield Solar Farm. These groups include:

- Economic interest groups and organisations such as local enterprise partnerships (LEPs) and chambers of commerce
- Heritage consultees including Historic England and the National Trust
- Environmental consultees including Natural England and the Environment Agency
- Infrastructure providers such as Highways England and National Grid
- Conservation groups such as the RSPB, CPRE Essex, Essex Wildlife Trust and the Ramblers

## 4.6 How will we be consulting?

4.6.1 We will use a range of techniques to consult the community. These are designed to allow people with different needs across the community to take part in the consultation in a way that is convenient to them while complying with Government guidance on COVID 19. These are set out in Table 3 overleaf.



**Table 3: consultation techniques and publicity**

Zone	How we will publicise consultation within this zone	How we will consult within this zone
1	<ul style="list-style-type: none"> <li>• Writing to all addresses within consultation zone 1</li> <li>• Writing to elected representatives at a parish, district, county and Parliamentary level, as well as community groups, within the zone with details of the consultation</li> <li>• Sharing a consultation information pack including Q&amp;As and a poster with local authorities, parish councils and community groups within the zone to allow them to promote the consultation through existing communications channels</li> <li>• Publicising the consultation in the following newspapers circulating in the consultation zone: the Chelmsford Weekly News, Essex Chronicle and Braintree and Witham Times</li> <li>• Publicising the consultation to regional and local broadcasters including BBC Radio Essex, BBC Look East</li> <li>• Advertising the consultation online</li> <li>• Publishing details of the consultation online at <a href="http://www.longfieldsolarfarm.co.uk">www.longfieldsolarfarm.co.uk</a></li> </ul>	<ul style="list-style-type: none"> <li>• Sending a copy of a consultation booklet providing a non-technical overview of the proposed Longfield Solar Farm, the EIA process, the consultation and planning process, how to take part in the consultation, and proposed next steps to all addresses in consultation zone 1</li> <li>• Inviting enquiries and responses online through the consultation website, by freephone, freepost or email. This will provide a variety of means for consultees to respond in a way convenient to them</li> <li>• Hosting a virtual public exhibition on the consultation website</li> <li>• Hosting webinars which will include a presentation regarding the proposals and an opportunity to ask questions. Dates for the webinars are included later in this document and will also be made available in consultation publicity</li> <li>• Inviting elected representatives to take part in briefings through a digital meeting</li> <li>• Inviting residents of consultation zone 1 to book an individual appointment to discuss the proposals by telephone or, if Government guidance on COVID 19 permits, in person at an appropriate venue</li> <li>• Contacting community and voluntary organisations within consultation zone 1 to offer direct engagement</li> <li>• Publication of consultation information online at the consultation website</li> <li>• Provision of copies of the Preliminary Environmental Information Report for review, as well as copies of the consultation booklet and questionnaire, at deposit points in the local area if permitted by Government guidance</li> </ul>

Alexander House - 1 Mandarin Road - Rainton Bridge Business Park - Houghton le Spring -DH4 5RA  
 Registered Company No. 11618210 - longfieldsolarfarm.co.uk

Zone	How we will publicise consultation within this zone	How we will consult within this zone
2	<ul style="list-style-type: none"> <li>• Writing to all district and county councillors at Braintree District Council, Chelmsford City Council and Essex County Council</li> <li>• Writing to all parish councils within the consultation zone</li> <li>• Sharing a consultation information pack designed to support stakeholders promoting consultation through their own existing communication channels such as social media feeds with local authorities, parish councils and community groups within the zone</li> <li>• Publicising the consultation in the following newspapers circulating in the consultation zone: the Chelmsford Weekly News, Essex Chronicle and Braintree and Witham Times</li> <li>• Publicising the consultation to regional and local broadcasters including BBC Radio Essex, BBC Look East</li> <li>• Advertising the consultation online</li> <li>• Publishing details of the consultation online at <a href="http://www.longfieldsolarfarm.co.uk">www.longfieldsolarfarm.co.uk</a></li> </ul>	<ul style="list-style-type: none"> <li>• Hosting webinars which will include a presentation regarding the proposals and an opportunity to ask questions. Dates for the webinars are included later in this document and will also be made available in consultation publicity</li> <li>• Hosting a virtual exhibition on the consultation website</li> <li>• Inviting elected representatives to take part in briefings through a digital meeting</li> <li>• Publication of consultation information online at the consultation website</li> <li>• Inviting enquiries and responses online through the consultation website, by freephone, freepost or email</li> </ul>

Alexander House - 1 Mandarin Road - Rainton Bridge Business Park - Houghton le Spring -DH4 5RA  
 Registered Company No. 11618210 - longfieldsolarfarm.co.uk

Zone	How we will publicise consultation within this zone	How we will consult within this zone
3	<ul style="list-style-type: none"> <li>• Writing to the Leader and Chief Executive of local authorities within the zone</li> <li>• Publicising the consultation in the East Anglian Daily Times</li> <li>• Advertising the consultation online</li> <li>• Publishing details of the consultation online at <a href="http://www.longfieldsolarfarm.co.uk/">http://www.longfieldsolarfarm.co.uk/</a></li> </ul>	<ul style="list-style-type: none"> <li>• Publication of consultation information online at the consultation website</li> <li>• Hosting a virtual exhibition on the consultation website</li> <li>• Hosting webinars which will include a presentation regarding the proposals and an opportunity to ask questions. Dates for the webinars are included later in this document and will also be made available in consultation publicity</li> <li>• Inviting enquiries and responses online through the consultation website, by freephone, freepost or email</li> </ul>

---

Alexander House - 1 Mandarin Road - Rainton Bridge Business Park - Houghton le Spring -DH4 5RA  
 Registered Company No. 11618210 - longfieldsolarfarm.co.uk



## 4.7 Changes to consultation arrangements

4.7.1 These consultation techniques have been developed to comply with the current COVID 19 alert level set by the Government. At the time of publication, this is Level 3 – a COVID 19 epidemic is in general circulation.

4.7.2 We recognise that, should social distancing restrictions be lifted in line with the earliest timetable that was set out by the Government on 22 February 2021, it is likely that the alert level will change during the consultation period. However, it is also important to provide certainty to consultees about how they will be consulted.

4.7.3 If the alert level is changed to Level 1 or 2, which would mean the Government considers the number of COVID 19 cases to be lower, we will consider holding in-person engagement at physical locations on a voluntary basis, over and above the requirements of this SoCC. The nature and type of this activity would depend on the degree to which restrictions had been lifted.

4.7.4 In the event that we hold engagement in person at physical locations, we will publicise the engagement using the methods outlined below. In writing to consultees, we will provide two weeks' notice of any events.

4.7.5 The holding of public events would require time to organise and therefore we would continue to assess whether it will be possible to undertake these activities up until 28 days before the scheduled close of consultation, after which date there would be insufficient time to organise and publicise events or deposit locations within the consultation period. If the alert level remained at 3 or higher on this date, we would not consider it possible to deliver this additional voluntary activity within the consultation period.

4.7.6 We will publicise changes in consultation arrangements to accommodate additional voluntary activity made possible by a change in the COVID 19 threat level by:

- Writing to all addresses, elected representatives, parish councils and community groups within consultation zone 1
- Issuing a poster to elected representatives, parish councils and community groups for local display
- Writing to all district and county councillors at Braintree District Council, Chelmsford City Council and Essex County Council (zone 2)
- Writing to all parish councils within consultation zone 2
- Publicising the change of arrangements in the Chelmsford Weekly News, Braintree and Witham Times, Essex Chronicle and East Anglian Daily Times
- Publicising the change of arrangements online

4.7.7 Depending on the outcome of the consultation, we may conduct further, targeted, consultation on a voluntary basis – for example, should there be a material change in the proposals or should substantial new issues arise.

---

Alexander House - 1 Mandarin Road - Rainton Bridge Business Park - Houghton le Spring -DH4 5RA  
Registered Company No. 11618210 - longfieldsolarfarm.co.uk



## 4.8 Consultation information

4.8.1 We will produce a range of materials providing information as part of the consultation including:

- A consultation booklet providing a non-technical overview of the proposed Longfield Solar Farm including key plans, the EIA process, the consultation and planning process, proposed next steps, and how to find out more and view other consultation documents
- A virtual exhibition setting out information about the proposals and how to take part in the consultation
- Presentations to be given as part of webinars
- The PEIR, accompanied by a non-technical summary
- A consultation questionnaire designed to collect responses to the consultation
- The SoCC

4.8.2 The PEIR will also incorporate the results of the environmental surveys that we have completed to date and set out our preliminary conclusions on the likely significant effects of the proposed Longfield Solar Farm on the environment. It will also give information about some of the measures that may be proposed to reduce or avoid those effects, so as to assist respondents in making well-informed responses to the consultation.

4.8.3 Copies of consultation information will be made available for review free of charge online at [www.longfieldsolarfarm.co.uk/downloads/](http://www.longfieldsolarfarm.co.uk/downloads/) and, should it become possible as outlined above, at public deposit points.

4.8.4 Hard copies of the consultation booklet, questionnaire and SoCC will also be made available free of charge on request. Copies of the PEIR will also be made available on USBs free of charge on request. A charge of £0.35 per page will be applicable for hard copies of the PEIR and its non-technical summary.

4.8.5 Consultation materials will include guidance on what respondents can influence through the consultation and how we will have regard to their responses.

## 4.9 Collection of responses

4.9.1 To capture participants' feedback, we will produce a consultation questionnaire inviting comments on the different elements of the proposed Longfield Solar Farm. The questionnaire will be made available by direct mail to people living in consultation zone 1, online through the proposed Longfield Solar Farm website, [www.longfieldsolarfarm.co.uk](http://www.longfieldsolarfarm.co.uk), and on request.

4.9.2 Consultees will be able to respond by completing the questionnaire online or returning the completed questionnaire using the contact details set out in this document during the consultation period.

---

Alexander House - 1 Mandarin Road - Rainton Bridge Business Park - Houghton le Spring -DH4 5RA  
Registered Company No. 11618210 - longfieldsolarfarm.co.uk



4.9.3 Alternatively, consultees can write to us via email or post at the addresses on pages 22-3. Pre-addressed Freepost envelopes will be made available on request using the contact details set out on pages 22-3.

## 4.10 Seldom heard audiences

4.10.1 It is important to ensure that consultation is inclusive and enables participation from a wide range of audiences, including those who are seldom heard in public consultation such as people without internet access, seasonal workers and socially isolated people. We will do this by:

- Holding webinars at a variety of times, including evenings and weekends, to enable participation by people with different time commitments and making recordings of webinars available afterwards.
- Making provision for people who do not have access to the internet through the consultation programme. This will include sending a copy of the consultation booklet and consultation questionnaire to every address in consultation zone 1, proactively offering meetings by telephone to people living in consultation zone 1 and making hard copies of consultation materials available as set out above.
- Choosing accessible venues for public information points or in-person engagement if these are to be utilised.
- Providing materials in alternative formats such as Braille on request. Details of how to request materials in alternative formats will be published at [www.longfieldsolarfarm.co.uk](http://www.longfieldsolarfarm.co.uk) and in the consultation booklet.
- Conducting an accessibility check of consultation materials prior to publication.
- Contacting community and voluntary organisations including parish councils and schools within consultation zone 1 to offer direct engagement and sharing a consultation information pack designed to support them in promoting consultation through their own existing communication channels such as social media feeds.
- Providing a variety of communications channels including a Freephone number, email address and Freepost address for those seeking information.

4.11 Groups we will seek to contact as part of the consultation include:

- Active Essex
- Age UK Essex
- Chelmsford Area Access Group
- Chelmsford Association of Voluntary Care Groups
- Chelmsford Retirement Action Group
- Collaborate Essex
- Essex Access Forum
- Essex Community Foundation
- Essex CVS

---

Alexander House - 1 Mandarin Road - Rainton Bridge Business Park - Houghton le Spring -DH4 5RA  
Registered Company No. 11618210 - [longfieldsolarfarm.co.uk](http://longfieldsolarfarm.co.uk)



- Essex Sight
- Healthwatch Essex
- Hearing Help Essex Ltd
- U3A Essex
- Young Essex Assembly

---

Alexander House - 1 Mandarin Road - Rainton Bridge Business Park - Houghton le Spring -DH4 5RA  
Registered Company No. 11618210 - longfieldsolarfarm.co.uk





## 5. Consultation arrangements

### 5.1 How to take part in the consultation

#### 5.1.1 Consultees can find out more by:

- Contacting us on 08081687925 or [info@longfieldsolarfarm.co.uk](mailto:info@longfieldsolarfarm.co.uk)
- Viewing a series of webinars we will give about the proposals online. These will offer the opportunity to ask questions about the proposals. These will include webinars taking place at 1400 on 5 June 2021 and 1900 on 10 June 2021. Details of how to register will be published at [www.longfieldsolarfarm.co.uk](http://www.longfieldsolarfarm.co.uk)
- We will publish details of any additional webinars at [www.longfieldsolarfarm.co.uk](http://www.longfieldsolarfarm.co.uk), as well as informing local elected representatives and parish councils in consultation zone 1
- Viewing a virtual public exhibition on our website, [www.longfieldsolarfarm.co.uk](http://www.longfieldsolarfarm.co.uk), which will be available to view at any time between the beginning and end of the consultation period.
- Booking an appointment to speak with members of the project team about our proposals individually. You can book an appointment using the contact details provided below. When booking appointments, we will ask for specific areas of interest to match the caller with a specialist member of the project team for their appointment.
- Reading a booklet summarising our proposals. We will send a copy of the booklet to all addresses in consultation zone 1. The booklet will also be available from our website, [www.longfieldsolarfarm.co.uk](http://www.longfieldsolarfarm.co.uk), and on request.
- Reviewing the PEIR and other consultation documents by going to our website, [www.longfieldsolarfarm.co.uk](http://www.longfieldsolarfarm.co.uk). Subject Government guidance on COVID 19, we plan to make the consultation documents are also available to view at following locations in the local area:
  - Hatfield Peverel Library, The St, Hatfield Peverel, Chelmsford CM3 2DP
  - Witham Library, 18 Newland St, Witham CM8 2AQ
  - Chelmsford Library, Chelmsford County Hall, Market Rd, Chelmsford CM1 1QH
- If this is possible, details of how to view documents at these locations will be included in the consultation booklet and at [www.longfieldsolarfarm.co.uk](http://www.longfieldsolarfarm.co.uk). Hard copies of consultation documents will also be available on request. A charge of £0.35 per page will be applicable for hard copies of the PEIR and its non-technical summary.

---

Alexander House - 1 Mandarin Road - Rainton Bridge Business Park - Houghton le Spring -DH4 5RA  
Registered Company No. 11818210 - [longfieldsolarfarm.co.uk](http://longfieldsolarfarm.co.uk)



## 5.2 Responding to the consultation

5.2.1 We welcome feedback on our proposals for Longfield Solar Farm. Anyone can share their views by:

- Completing a consultation questionnaire online at [www.longfieldsolarfarm.co.uk](http://www.longfieldsolarfarm.co.uk)
- Returning a questionnaire to Longfield Solar Farm consultation, FREEPOST reference RTRB-LUUJ-AGBY, c/o SEC Newgate UK, Sky Light City Tower, 50 Basinghall Street, London, EC2V 5DE or [info@longfieldsolarfarm.co.uk](mailto:info@longfieldsolarfarm.co.uk)
- Submitting their comments by email to [info@longfieldsolarfarm.co.uk](mailto:info@longfieldsolarfarm.co.uk) or in writing to the above Freepost address.

5.2.2 Responses must be received in writing by the consultation deadline of 23:59 on the advertised closing date of the consultation.

5.2.3 Responses must be individual. Petitions will be treated as a single response for the purpose of the Consultation Report.

## 5.3 How we will consider the responses

5.3.1 Following the statutory consultation, we will consider all the views that we receive and continue to develop our design for the proposed Longfield Solar Farm ahead of submitting our DCO application to the Secretary of State. Our DCO application will include a Consultation Report, which will set out how we have consulted, summarise responses and key issues raised, and set out how we have had regard to all responses received.

5.3.2 Any comments received will be analysed by Longfield Solar Energy Farm Ltd and any of its appointed agents. Copies may be made available in due course to the Secretary of State, the Planning Inspectorate and other relevant statutory authorities so that feedback can be considered as part of the DCO process. We will request that any personal details are not placed on public record and will be held securely by Longfield Solar Energy Farm Ltd and its agents in accordance with the data protection law and will be used solely in connection with the consultation process and subsequent DCO application and, except as noted above, will not be passed to third parties.

5.3.3 The Planning Inspectorate has also published details of how it manages comments received in a Privacy Notice available on its website:

[https://assets.publishing.service.gov.uk/government/uploads/system/uploads/attachment\\_data/file/879604/Privacy\\_Note\\_Final\\_15042020.pdf](https://assets.publishing.service.gov.uk/government/uploads/system/uploads/attachment_data/file/879604/Privacy_Note_Final_15042020.pdf)

## 5.4 Further information

5.4.1 For further information, please contact us by:

- Visiting the proposed Longfield Solar Farm website: [www.longfieldsolarfarm.co.uk](http://www.longfieldsolarfarm.co.uk)
- Calling 08081687925 (9:00am to 5:00pm, Monday to Friday)

---

Alexander House - 1 Mandarin Road - Rainton Bridge Business Park - Houghton le Spring -DH4 5RA  
Registered Company No. 11618210 - [longfieldsolarfarm.co.uk](http://longfieldsolarfarm.co.uk)





- Emailing [info@longfieldsolarfarm.co.uk](mailto:info@longfieldsolarfarm.co.uk)
- Writing to the project team at: Longfield Solar Farm consultation, FREEPOST reference RTRB-LUUJ-AGBY, c/o SEC Newgate UK, Sky Light City Tower, 50 Basinghall Street, London, EC2V 5DE

---

Alexander House - 1 Mandarin Road - Rainton Bridge Business Park - Houghton le Spring -DH4 5RA  
Registered Company No. 11618210 - longfieldsolarfarm.co.uk

# Appendix D-2: Copies of notices of availability of SoCC published under S47 of PA 2008

## D-2.1 Braintree and Witham Times – 27 May 2021



# LOCAL LISTINGS PUBLIC NOTICES

To advertise telephone:  
**01206 508351**  
 or email:  
**essex.public.notices@newsquest.co.uk**

Planning Notices | Traffic Notices | Legal Notices | Probate Notices | Other Notices | Church and Religious Notices | Tenders and Contracts | Goods Vehicle Operator Licences

Planning Notices	Planning Notices
<p style="text-align: center;"><b>Section 48 - Planning Act 2008</b></p> <p style="text-align: center;"><b>Longfield Solar Farm Notice publishing a proposed application for Development Consent Order</b></p> <p>Regulation 4 (Infrastructure Planning) (Prescribed Forms and Procedures) (Regulations 2009) Notice is hereby given that Longfield Solar Energy Farm Ltd of Alexander House, 1 Mandarin Road, Rainston Bridge Business Park, Houghton in Spring, CH4 9RA proposes to make an application ("the Application") to the Secretary of State for Business, Energy and Industrial Strategy under Section 37 of the Planning Act 2008 for a Development Consent Order. The Applicant intends to make the Application in July 2021. The Application is for the proposed Longfield Solar Farm at farmland north east of Chelmsford, and north of the A12 between Bonhams and Hatfield Peverel, Essex (the "Site"). The Longfield Solar Farm will cover an area of approximately 459 hectares (ha).</p> <p>The Scheme's main proposals in summary are:</p> <ul style="list-style-type: none"> <li>construction, operation, maintenance and decommissioning of ground mounted PV Arrays, Solar Stations and a Battery Energy Storage System (BESS), along with various underground D distribution Cables;</li> <li>associated and/or ancillary works including a new substation known as the Longfield Substation which will be connected to the PV Array and BESS via underground Distribution Cables. The Longfield Substation will then link into the existing Bulls Lodge Substation, operated by National Grid. The Scheme includes an extension to the existing Bulls Lodge Substation. Other works will include primary and secondary access tracks and ancillary buildings such as offices. There will also be parts of the DCO site used for landscape works which will include features such as biodiversity improvement measures and fencing;</li> <li>the compulsory acquisition of land and/or rights and the taking of temporary possession of land;</li> <li>the overlying of easements and other rights over or affecting land;</li> <li>the application and/or discharge of legislation relating to the Longfield Solar Farm and;</li> <li>such ancillary, incidental and consequential provisions, licences, property rights, permits and consents as are necessary and/or convenient.</li> </ul> <p>The scheme is an Environmental Impact Assessment "development" (EIA development) as defined by The Infrastructure Planning (Environmental Impact Assessment) Regulations 2017 and an Environmental Statement will be submitted as part of the Application. A Preliminary Environmental Information (PEI) Report forms part of the consultation material.</p> <p>Consultation on the proposals will take place from 1 June 2021 to 13 July 2021. The Applicant is making available a number of ways to find out more about the Scheme including:</p> <ul style="list-style-type: none"> <li>Viewing a virtual exhibition on the project website. The virtual exhibition will be available from 1 June 2021 to 13 July 2021 at: <a href="https://www.longfieldfarm.co.uk/public-consultation/">https://www.longfieldfarm.co.uk/public-consultation/</a></li> <li>Viewing a series of webinars we will give about our proposed application. These will include presentations on specific topics and offer the opportunity to ask questions. The dates of the webinars and details of how to register will be made available during the consultation period at: <a href="https://www.longfieldfarm.co.uk/public-consultation/">https://www.longfieldfarm.co.uk/public-consultation/</a></li> <li>Bookings an appointment to talk about the proposals by telephone using the contact details below. This will offer the opportunity to speak with members of our technical team about specific aspects of our proposals.</li> </ul> <p>The Applicant will also publish consultation materials including a consultation booklet, the PEI Report, a Non-Technical Summary of the PEI Report and a Statement of Community Consultation (SoCC). These will be available online free of charge from 1 June 2021 until 13 July 2021 at <a href="http://www.longfieldfarm.co.uk/consult">www.longfieldfarm.co.uk/consult</a>. Details of each website and how to register to take part will be published on the same website. Subject to any restrictions relating to the COVID-19 pandemic, we are intending to take part in the consultation material available to assist for inspection free of charge during the consultation period at locations in the vicinity of the Scheme, listed below. Please visit <a href="http://www.longfieldfarm.co.uk/public-consultation">www.longfieldfarm.co.uk/public-consultation</a> to check the most up to date information on all locations and the arrangements in place for inspecting the documents. Alternatively, you can contact us on the details below.</p> <p><b>Location:</b>                  Hatfield Peverel Library The St. Hatfield Peverel, Chelmsford CM3 2DP                  Wilton Library, 18 Newland St, Wilton CM3 2JQ                  Chelmsford Library, Chelmsford County Hall, Market Rd, Chelmsford CM1 1QH</p> <p>Copies of the consultation materials may be requested during the consultation period from Longfield Solar Energy Farm Ltd using the email address, postal address or telephone number provided below:</p> <ul style="list-style-type: none"> <li>By post Longfield Solar Farm Consultation, FREEMPOST reference RTB-LUUA-AGBY, c/o SEC Newgate, Sky Light City Tower, 50 Basinghall Street, London, EC2V 5SE</li> <li>Or by email: <a href="mailto:info@longfieldfarm.co.uk">info@longfieldfarm.co.uk</a></li> <li>By email: <a href="mailto:info@longfieldfarm.co.uk">info@longfieldfarm.co.uk</a></li> <li>By telephone: 0800 818 8795</li> </ul> <p>Any enquiries relating to the consultation materials, documents, plans and maps can be made to the Applicant using the telephone number or email above.</p> <p>Paper copies of the consultation booklet, response form and SoCC will be supplied free of charge. A USB of the consultation materials will be supplied free of charge. A charge of £0.35 per page will be applied for a paper copy of the PEI Report, including its Non-Technical Summary and Appendices.</p> <p>Any person may comment on the proposals or otherwise respond to this publicity. Responses must be received between 1 June 2021 to 13 July 2021. A consultation questionnaire is available as part of the consultation, and the consultation website will also allow the submission of electronic consultation responses. When providing your responses, please include your name and address as if you would prefer your comments to be seen publicly, your contact details, how you contacted us, and how you contacted us. Please supply any response to:</p> <ul style="list-style-type: none"> <li>By post Longfield Solar Farm Consultation, FREEMPOST reference RTB-LUUA-AGBY, c/o SEC Newgate UK, Sky Light City Tower, 50 Basinghall Street, London, EC2V 5SE</li> <li>By email: <a href="mailto:info@longfieldfarm.co.uk">info@longfieldfarm.co.uk</a></li> <li>By telephone: 0800 818 8795.</li> </ul> <p>Responses must be received no later than 23:59 hours on 13 July 2021.</p> <p>Longfield Solar Energy Farm Ltd will consider and have regard to all responses received by the above deadline when deciding whether to apply for a Development Consent Order or on consultation has closed. Responses will form the basis of a Consultation Report that will be one of the factors taken into consideration by the Secretary of State when deciding whether the Application can be authorised for construction. Therefore, in providing any comment, it should be borne in mind that the substance of it may be communicated to others as part of the Consultation Report.</p> <p>If you would like further information about this notice, the consultation or the scheme, please contact the project team by using one of the contact methods provided above.</p>	<p style="text-align: center;"><b>Section 47(3) Planning Act 2008 - Longfield Solar Farm</b></p> <p style="text-align: center;"><b>Notice of Publication of Statement of Community Consultation</b></p> <p>Notice is hereby given that Longfield Solar Energy Farm Ltd of Alexander House, 1 Mandarin Road, Rainston Bridge Business Park, Houghton in Spring, CH4 9RA (the "Applicant") proposes to make an application (the "Application") under section 37 of the Planning Act 2008 to the Secretary of State for Business, Energy and Industrial Strategy for a Development Consent Order ("DCO") to authorise the construction, operation, maintenance, and decommissioning of a solar photovoltaic (PV) array electricity generating facility and energy storage facility with a total capacity exceeding 50 megawatts (MW) and export connection to the National Grid ("the Scheme"). The Scheme would be located on farmland north east of Chelmsford, and north of the A12 between Bonhams and Hatfield Peverel, covering an area of approximately 459 hectares (ha) (the "DCO Site"). Of the DCO site, around 67% is likely to be used for the location of the PV Array, with other areas being used for the BESS, substations and underground cabling, access tracks, some ancillary buildings, as well as areas of landscaping.</p> <p>The proposed DCO will, amongst other things, authorise:</p> <ul style="list-style-type: none"> <li>construction, operation, maintenance and decommissioning of ground mounted PV Arrays, Solar Stations and a Battery Energy Storage System (BESS), along with various underground D distribution Cables;</li> <li>associated and/or ancillary works including a new substation known as the Longfield Substation which will be connected to the PV Array and BESS via underground Distribution Cables. The Longfield Substation will then link into the existing Bulls Lodge Substation, operated by National Grid. The Scheme includes an extension to the existing Bulls Lodge Substation. Other works will include primary and secondary access tracks and ancillary buildings such as offices. There will also be parts of the DCO site used for landscape works which will include features such as biodiversity improvement measures and fencing;</li> <li>the compulsory acquisition of land and/or rights and the taking of temporary possession of land;</li> <li>the overlying of easements and other rights over or affecting land;</li> <li>such ancillary, incidental and consequential provisions, licences, property rights, permits and consents as are necessary and/or convenient.</li> </ul> <p>The Longfield Solar Farm will generate in excess of 50MW of electrical capacity. It is classed as a Nationally Significant Infrastructure Project under the Planning Act 2008. Accordingly, the Applicant will apply to the Secretary of State for a DCO under the Planning Act 2008.</p> <p>Before the Application is submitted, the Applicant has a duty to consult the local community under section 47 of the Planning Act 2008 in accordance with a Statement of Community Consultation ("SoCC"). The SoCC explains how the Applicant will be consulting the local community about the proposed Application.</p> <p>The Applicant has produced a SoCC in respect of the proposed Application and which can be viewed free of charge on the project website from 1 June 2021 until 13 July 2021. To view the SoCC, please go to the following page on the website: <a href="https://www.longfieldfarm.co.uk/consult">https://www.longfieldfarm.co.uk/consult</a>.</p> <p>Details of how the consultation for the proposed Application will be carried out, including a virtual exhibition, on consultation events, and how to get involved are set out in the SoCC. The consultation on the Scheme will take place between 1 June 2021 and 23:59 hours on 13 July 2021.</p> <p>The proposed Longfield Solar Farm is an Environmental Impact Assessment ("EIA") development for the purposes of the Infrastructure Planning (Environmental Impact Assessment) Regulations 2017. The Applicant is, therefore, required to carry out an EIA and submit an Environmental Statement with the proposed Application containing information about the likely significant environmental impacts of the Longfield Solar Farm on the environment. Information currently available about the likely significant environmental impacts of the Longfield Solar Farm will be set out in a Preliminary Environmental Information ("PEI") Report that will form part of the consultation documents. As stated in the SoCC, the PEI Report will be available to view and comment on the project website from the start of the consultation period on 1 June 2021. To view the PEI Report from this date, please visit the following page on the website: <a href="https://www.longfieldfarm.co.uk/public-consultation/">https://www.longfieldfarm.co.uk/public-consultation/</a>.</p> <p>A copy of the SoCC can be requested from the Applicant from 1 June 2021:</p> <ul style="list-style-type: none"> <li>By post Longfield Solar Farm Consultation, FREEMPOST reference RTB-LUUA-AGBY, c/o SEC Newgate, Sky Light City Tower, 50 Basinghall Street, London, EC2V 5SE</li> <li>Or by email: <a href="mailto:info@longfieldfarm.co.uk">info@longfieldfarm.co.uk</a></li> <li>By email: <a href="mailto:info@longfieldfarm.co.uk">info@longfieldfarm.co.uk</a></li> </ul> <p>As part of its consultation with the community, the Applicant will produce a virtual exhibition. This will be available at <a href="https://www.longfieldfarm.co.uk/public-consultation/">https://www.longfieldfarm.co.uk/public-consultation/</a>. We will also be holding a series of webinars about the proposals online and recordings of these webinars will be posted on the website after they have been held.</p> <p>Details of each session and how to register to take part will be published at <a href="https://www.longfieldfarm.co.uk/public-consultation/">https://www.longfieldfarm.co.uk/public-consultation/</a> and published online. Moreover, a consultation booklet with information about our proposals will be published for members of the public to read, and should you have any questions, you can book an appointment to talk to us individually about the proposals by email or telephone using <a href="mailto:info@longfieldfarm.co.uk">info@longfieldfarm.co.uk</a> or 0800 818 8795.</p> <p>Should you have any questions about the SoCC or the consultation on the proposed Application please visit the project website or contact the Applicant using the above details or on 0800 818 8795.</p>

**Legal Notices**

**\*Public Notice for the purposes of Section 121 of The Chertiffs Act 2011**

Marka Hall Estate (charity) registered no. 252780, (the Charity) gives notice that the Charity proposes to dispose of the benefit of 1.22 acres or thereabouts of land siting Gable, On the Barrowe Park, Earskine, Colchester Essex CO3 2NS. Any representations or comments in relation to the proposed transaction should be sent for consideration of the Trustees to the following address by no later than 01 June 2021. Trustees of Marka Hall Estate, The Estate Office, Marka Hall Estate, Coggeshall, Essex, CO3 1TQ

**For expert advice**  
 on private law cases in this paper call  
**01268 533933**

Let us help build your business

**At Your Service**

**The UK's Best Travel Insurance!**

**Trustpilot** Rated Excellent  
Based on over 188,860 reviews

**15% off Travel Insurance**

Book by 11/11

## D-2.2 Chelmsford and Mid Essex Times – 27 May 2021

The screenshot shows the Chelmsford & Mid Essex Times website interface. At the top, there is a navigation bar with links for 'Contact us', 'Jobs', 'Home', 'Motoring', 'Local listings', 'Book an ad', and 'Local info'. The main header features the 'Chelmsford & Mid Essex TIMES' logo and a 'Find and Promote Local Events' button. Below the header, there is a search bar and a navigation menu with categories like 'News', 'Sport', 'What's On', 'Competitions', 'Announcements', 'e-editions', and 'Stay Informed and Stay Safe'. The main content area displays a search results page for 'Longfield Solar Energy Farm Ltd'. The search filters on the left include 'Location' (Town or Postcode, Distance in Miles), 'Keyword', 'Notice ID', and 'Local Authority'. The search results show a 'PLANNING' notice titled 'Longfield Solar Farm Section 47(6) Planning Act 2008 - Longfield Solar Farm Notice of Publication of Statement of Community Consultation'. The notice ID is COL2096385 and it is effective from 27th May 2021 to 26th June 2021. There are social media sharing options and a 'Get notices by email for this search' button. The main text of the notice describes the 'Longfield Solar Farm' project, which involves the construction, operation, and maintenance of a solar photovoltaic (PV) array, electricity generating facility, and energy storage facility with a total capacity exceeding 50 megawatts (MW) and export connection to the National Grid. The scheme is located on farmland north east of Chelmsford, east of the A12 between Boxborough and...

Contact your Local Authority

Write to MP

Report a problem



The Longfield Solar Farm will comprise the construction, operation and maintenance, and decommissioning of a solar photovoltaic (PV) array electricity generating facility and energy storage facility with a total capacity exceeding 50 megawatts (MW) and export connection to the National Grid ("The Scheme"). The Scheme would be located on farmland north east of Chelmsford, and north of the A12 between Boreham and Hatfield Peverel, covering an area of approximately 459.23 hectares (ha) ("the DCO Site"). Of the DCO site, around 63% is likely to be used for the location of the PV Arrays, with other areas being used for the BESS, substations and underground cabling, access tracks, some ancillary buildings, as well as areas of landscaping.

The proposed DCO will, amongst other things, authorise:  
 construction, operation, maintenance and decommissioning of ground mounted PV Arrays, Solar Stations and a Battery Energy Storage System (BESS), along with various underground Distribution Cables;  
 associated and/or ancillary works including a new substation, known as the Longfield Substation which will be connected to the PV Arrays and BESS via underground Distribution Cables. The Longfield Substation will then link into the existing Bulls Lodge Substation, operated by National Grid. The Scheme includes an extension to the existing Bulls Lodge Substation. Other works will include primary and secondary access tracks and ancillary buildings such as offices. There will also be parts of the DCO Site used for landscape works which will include features such as biodiversity improvement measures and fencing;  
 the compulsory acquisition of land and/or rights and the taking of temporary possession of land;  
 the overriding of easements and other rights over or affecting land;  
 the application and/or disapplication of legislation relating to the Longfield Solar Farm; and,  
 such ancillary, incidental and consequential provisions, licences, property rights, permits and consents as are necessary and/or convenient.  
 As the Longfield Solar Farm will generate in excess of 50MW of electrical capacity, it is classed as a Nationally Significant Infrastructure Project under the Planning Act 2008. Accordingly, the Applicant will apply to the Secretary of State for a DCO under the Planning Act 2008.

Before the Application is submitted, the Applicant has a duty to consult the local community under section 47 of the Planning Act 2008 in accordance with its Statement of Community Consultation ("SoCC"). The SoCC explains how the Applicant will be consulting the local community about the proposed Application. The Applicant has produced a SoCC in respect of the proposed Application and which can be viewed free of charge on the project website from 1 June 2021 until 13 July 2021.

To view the SoCC, please go to the following page on the website:  
<https://www.longfieldsolarfarm.co.uk/downloads/>

. Details of how the consultation for the proposed Application will be carried out, including a virtual exhibition, consultation events, and how to get involved are set out in the SoCC. The consultation on the Scheme will take place between 1 June 2021 and 23:59 hours on 13 July 2021. The proposed Longfield Solar Farm is an Environmental Impact Assessment ("EIA") development for the purposes of the Infrastructure Planning (Environmental Impact Assessment) Regulations 2017. The Applicant is, therefore, required to carry out an EIA and submit an Environmental Statement with the proposed Application containing information about the likely significant effects of the Longfield Solar Farm on the environment. Information currently available about the likely significant environmental impacts of the Longfield Solar Farm will be set out in a Preliminary Environmental Information ("PEI") Report that will form part of the consultation documents. As stated in the SoCC, the PEI Report will be available to view and comment on the project website from the start of the consultation period on 1 June 2021. To view the PEI Report from this date, please visit the following page on the website:  
<https://www.longfieldsolarfarm.co.uk/downloads/>

. A copy of the SoCC can be requested from the Applicant from 1 June 2021:  
 By post: Longfield Solar Farm Consultation, FREEPOST reference RTRB-LUJJ-AGBY, c/o SEC Newgate, Sky Light City Tower, 50 Basinghall Street, London, EC2V 5DE  
 Online:  
[www.longfieldsolarfarm.co.uk](http://www.longfieldsolarfarm.co.uk)

By email:  
[info@longfieldsolarfarm.co.uk](mailto:info@longfieldsolarfarm.co.uk)

As part of its consultation with the community, the Applicant will produce a virtual exhibition. This will be viewable at  
<https://www.longfieldsolarfarm.co.uk/public-consultation/>

. We will also be holding a series of webinars about the proposals online and recordings of these webinars will be posted on the website after they have been held. Details of each session and how to register to take part will be published at

each session and how to register to take part will be published at  
<https://www.longfieldsolarfarm.co.uk/public-consultation/>  
 and publicised online. Moreover, a consultation booklet with information about our proposals will be published for members of the public to read, and should you have any questions, you can book an appointment to talk to us individually about the proposals by email or freephone using  
[info@longfieldsolarfarm.co.uk](mailto:info@longfieldsolarfarm.co.uk)  
 or 08081687925. Should you have any questions about the SoCC or the consultation on the proposed Application please visit the project website or contact the Applicant using the above details or on 08081687925.

**Attachments**

COL2096385.pdf

Download

Share this notice



D-2.3 Essex Chronicle – 27 May 2021





## Appendix D-3: Compliance with SoCC

D-3.1 Details of the way in which the Applicant complied with commitments made in the SoCC are set out in **Table D-3.1** below. In short, the Applicant believes it complied with all commitments made in the SoCC.

**Table D-3.1 Compliance with the SoCC**

Page	Section	Commitment	Compliance
9	Consulting the community - What will be consulted on?	Seek views on proposed Longfield Solar Farm; short- and long-term impacts including during construction, environmental, operations, decommissioning, and other impacts in this period, such as socioeconomic and cumulative impacts; proposed mitigation of these impacts; community contribution; the PEIR.	The Applicant included questions on these topics in the consultation questionnaire, as set out in 6.4.14.
9	Consulting the community - environmental impacts	Publish the PEIR as part of the consultation.	The Applicant published the PEIR online at the consultation website.
10	Consulting the community - Who will we consult?	We will consult widely in accordance with this SoCC and encourage participation in the consultation from any person or group who is likely to be impacted by the proposed Longfield Solar Farm. Please see Table 2 below for the geographic areas within which we will consult.	The Applicant consulted in the areas set out in Table 2 of the SoCC in the manner set out in <b>Table 6-4</b> of the Consultation Report.
10	Consulting the community - Who will we consult?	Consultation zone 1 to comprise of any person or group likely to be directly impacted by the proposed Longfield Solar Farm by virtue of their living or working in proximity to the site.	The Applicant consulted within this zone as set out in <b>Table 6-4</b> of the Consultation Report.



Page	Section	Commitment	Compliance
		<p>This zone is defined by the boundaries of the parishes of Boreham, Fairstead, Great and Little Leighs, Hatfield Peverel, Little Waltham and Terling as shown in Figure 3 below.</p>	
13	<p>Consulting the community - Who will we consult?</p>	<p>We will also consult and continue our engagement with a range of statutory consultees as set out by Section 42 and Section 48 of the Planning Act 2008 and additional organisations that we recognise to have an interest in the proposed Longfield Solar Farm.</p>	<p>Details of statutory organisations consulted by the Applicant are in <b>Appendix E-1 [EN010118/APP/5.6]</b>. Details of community organisations consulted by the Applicant are included in <b>Appendix H-1 [EN010118/APP/5.9]</b></p>
14-6	<p>Consulting the community - table 3</p>	<p>Writing to all addresses within consultation zone 1</p>	<p>The Applicant sent a copy of the consultation booklet alongside a Freepost envelope and a copy of the consultation questionnaire at the start of the consultation period.</p>
14-6	<p>Consulting the community - table 3</p>	<p>Writing to elected representatives, parish councils and community groups within consultation zone 1 with details of the consultation</p>	<p>The Applicant wrote to elected representatives, parish councils and community groups within the zone with details of the consultation at the start of the consultation period. This included a consultation information pack sent by email designed to support stakeholders promoting consultation through their own existing communication channels such as social media feeds. This is included with consultation materials in</p>

Page	Section	Commitment	Compliance
			<b>Appendices G-2, G-3 and G-4 [EN010118/APP/5.8].</b>
14-6	Consulting the community - table 3	Sharing a consultation information pack designed to support stakeholders promoting consultation through their own existing communication channels such as social media feeds with local authorities, parish councils, and community groups within consultation zone 1.	The Applicant wrote to elected representatives and parish councils within the zone with details of the consultation at the start of the consultation period. Community groups were contacted with the information pack during the consultation. This included a consultation information pack sent by email designed to support stakeholders promoting consultation through their own existing communication channels such as social media feeds. This is included with consultation materials in <b>Appendices G-2, G-3 and G-4 [EN010118/APP/5.8].</b>
14-6	Consulting the community - table 3	Advertising the consultation on social media	The Applicant advertised the consultation via the social media channels of local and regional media - Chelmsford Weekly News, Braintree and Witham Times, Essex Chronicle and East Anglian Daily Times. Copies are included in <b>Appendix G-5 [EN010118/APP/5.8].</b> EDF also published a post advertising the consultation on LinkedIn.
14-6	Consulting the community - table 3	Published details of the consultation online at the consultation website, <b>Appendix L-1 [EN010118/APP/5.13].</b>	The Applicant published details of the consultation online at the consultation website, <b>Appendix L-1 [EN010118/APP/5.13].</b>

Page	Section	Commitment	Compliance
14-6	Consulting the community - table 3	Sending a copy of a consultation booklet providing a non-technical overview of the proposed Longfield Solar Farm, the EIA process, the consultation and planning process, how to take part in the consultation, and proposed next steps to all addresses in consultation zone 1.	The Applicant sent a copy of the consultation booklet alongside a Freepost envelope and a copy of the consultation questionnaire at the start of the consultation period.
14-6	Consulting the community - table 3	Inviting enquiries and responses online through the consultation website, by freephone, freepost or email. This will provide a variety of means for consultees to respond in a way convenient to them.	The Applicant invited enquiries and responses online through the consultation website, by freephone (0808 168 7925), freepost (Longfield Solar Farm consultation, FREEPOST reference RTRB-LUUJ-AGBY, c/o SEC Newgate UK Communications, Sky Light City Tower, 50 Basinghall Street, London, EC2V 5DE) or email. These details were included in all consultation materials. This provided a variety of means for consultees to respond in a way convenient to them.
14-6	Consulting the community - table 3	Hosting a virtual public exhibition on the consultation website.	The Applicant hosted a virtual public exhibition at the consultation website, <b>Appendix L-1 [EN010118/APP/5.13]</b> .
14-6	Consulting the community - table 3	Hosting webinars which will include a presentation regarding the proposals and an opportunity to ask questions.	Details of webinars held as part of the consultation are included in <b>Table 6-5 of the Consultation Report [EN010118/APP/5.1]</b> ..

Page	Section	Commitment	Compliance
14-6	Consulting the community - table 3	Inviting elected representatives to take part in briefings through a webinar.	The Applicant briefed elected members from Braintree District Council on 18 June 2021, elected members from Essex County Council on 23 June 2021 and elected members from Chelmsford City Council on 7 June 2021.
14-6	Consulting the community - table 3	Inviting residents of consultation zone 1 to book an individual appointment to discuss the proposals by telephone.	The Applicant invited residents of consultation zone 1 to book an individual appointment to discuss the Scheme by telephone, providing an opportunity for those without access to the internet to ask questions. Details of how to book an appointment were included in the consultation booklet and consultation advertising.
14-6	Consulting the community - table 3	Contacting community and voluntary organisations within consultation zone 1 to offer direct engagement.	The Applicant contacted community and voluntary organisations, and other relevant bodies, within consultation zone 1 to offer direct engagement and share detailed of the consultation. These organisations are listed in <b>Appendix H-1 [EN010118/APP/5.9]</b>
14-6	Consulting the community - table 3	Publication of consultation information online at the consultation website.	The Applicant published all consultation materials online at the consultation website, <b>Appendix L-1 [EN010118/APP/5.13]</b> .
14-6	Consulting the community - table 3	Compliance with the most up to date legal requirements in relation to public deposits.	In line with the Government's confirmation that placing materials online meets the requirement to place information on public deposit

Page	Section	Commitment	Compliance
			<p>in the Infrastructure Planning (Publication and Notification of Applications etc.) (Coronavirus) (Amendment) Regulations 2020 (the 2020 Regulations), all consultation materials were made available online at the consultation website for the duration of the consultation period. They were also made available to view at several deposit points in the local area.</p>
14-6	Consulting the community - table 3	Writing to all district and county councillors at Braintree District Council, Chelmsford City Council and Essex County Council.	The Applicant wrote to all district and county councillors at Braintree District Council, Chelmsford City Council and Essex County Council at the start of the consultation period.
14-6	Consulting the community - table 3	Writing to all parish councils in consultation zone 2	The Applicant wrote to all parish councils in consultation zone 2 at the start of the consultation period.
14-6	Consulting the community - table 3	Sharing a consultation information pack designed to support stakeholders promoting consultation through their own existing communication channels such as social media feeds with local authorities, parish councils and community groups within consultation zone 2.	The Applicant wrote to elected representatives, parish councils and community groups within the zone with details of the consultation at the start of the consultation period. This included a consultation information pack sent by email designed to support stakeholders promoting consultation through their own existing communication channels such as social media feeds. This is included

Page	Section	Commitment	Compliance
			with the consultation materials in <b>Appendices G-2, G-3 and G-4 [EN010118/APP/5.8]</b> .
14-6	Consulting the community - table 3	Writing to the Leader and Chief Executive of local authorities within consultation zone 3	The Applicant wrote to the Leader and Chief Executive of local authorities within consultation zone 3 at the start of the consultation period.
14-6	Consulting the community - table 3	Publicising the consultation in the following newspapers circulating in the consultation zone: the Braintree and Witham Times, Chelmsford and Mid Essex Times, Essex Chronicle and East Anglian Daily Times.	The Applicant advertised the consultation in the following newspapers circulating in the consultation zone: the Braintree and Witham Times (27 May 2021), Chelmsford and Mid Essex Times (27 May 2021), Essex Chronicle (27 May 2021) and the East Anglian Daily Times (27 May 2021). Copies are included in <b>Appendix G-5 [EN010118/APP/5.8]</b>
14-6	Consulting the community - How will we be consulting?	Consider holding public events on a voluntary basis in consultation with local authorities if the coronavirus threat level has been lowered to 1 or 2 by 1 June 2021.	As the coronavirus threat level was lowered, public events were held on 8 June 2021, 9 June 2021, 12 June 2021, 15 June 2021, 17 June 2021, 29 June 2021, and 30 June 2021.
17	Consulting the community - How will we be consulting?	Publicise changes to consultation arrangements by: <ul style="list-style-type: none"> <li>- Writing to all addresses and elected representatives within consultation zone 1;</li> <li>- Issuing a poster to elected representatives, parish councils and community groups for local display;</li> </ul>	In addition to the community consultation carried out in compliance with the SoCC, the Applicant carried out further consultation on a voluntary basis after the COVID 19 threat level was lowered to allow a maximum of 6 persons to meet indoors, and 30 outdoors.

Page	Section	Commitment	Compliance
		<ul style="list-style-type: none"> <li>- Writing to all district and county councillors at Braintree District Council, Chelmsford City Council and Essex County Council (zone 2);</li> <li>- Writing to all parish councils within consultation zone 2;</li> <li>- Publicising the change of arrangements in the Chelmsford Weekly News, Braintree and Witham Times, Essex Chronicle and East Anglian Daily Times; and</li> <li>- Publicising the change of arrangements on social media</li> </ul>	<p>Public consultation events were subsequently scheduled, after the consultation period had begun, on 8 June 2021, 9 June 2021, 12 June 2021, 15 June 2021, 17 June 2021. Two further dates were also scheduled in late June - 29 June 2021 and 30 June 2021 – to allow those who missed the previous events to meet the Project Team.</p> <p>These ticketed public exhibitions in the local area were held in line with Government guidance. Visitors were able to view a socially distanced public exhibition and meet the project team. A virtual model of the proposals was also present.</p>
18	Consulting the community - consultation information	<p>We will produce a range of materials providing information as part of the consultation, including:</p> <ul style="list-style-type: none"> <li>- A consultation booklet providing a non-technical overview of the proposed Longfield Solar Farm, the EIA process, the consultation and planning process, and proposed next steps;</li> <li>- A virtual exhibition setting out information about the proposals and how to take part in the consultation;</li> <li>- A presentation to be given as part of webinars;</li> </ul>	<p>The Applicant produced these materials as set out in 6.4.8 and included in <b>Appendices G-2 – G-6 [EN010118/APP/5.8]</b>.</p>

Page	Section	Commitment	Compliance
		<ul style="list-style-type: none"> <li>- The PEIR, accompanied by a non-technical summary; and</li> <li>- A consultation questionnaire designed to collect responses to the consultation</li> </ul>	
18	Consulting the community - consultation information	<p>Copies of consultation information will be made available for review free of charge online at the consultation website, <b>Appendix L-1 [EN010118/APP/5.13]</b>, and should it become possible as outlined above, at public deposit points. Hard copies of documents will also be made available on request.</p>	<p>Copies of all consultation information were made available for review free of charge online at the consultation website – <b>Appendix L-1 [EN010118/APP/5.13]</b>. While public deposit points were not included in the SoCC, the Applicant identified the opportunity to provide a hard copy of the PEIR for residents to access during the consultation period at Hatfield Peverel Library, The St, Hatfield Peverel, Chelmsford CM3 2DP; Witham Library, 18 Newland St, Witham CM8 2AQ; Chelmsford Library, Chelmsford County Hall, Market Road, Chelmsford CM1 1QH; St John’s Church Little Leighs, Church Lane, Little Leighs, Chelmsford CM3 1PQ. The Applicant also made hard copies of the consultation booklet, questionnaire, and other consultation materials available on request.</p>



Page	Section	Commitment	Compliance
18	Consulting the community - Collection of responses	To capture participants' feedback, we will produce a consultation questionnaire inviting comments on the different elements of the proposed Longfield Solar Farm.	The Applicant produced a consultation questionnaire as set out in 6.4.14 and included in <b>Appendix G-3 [EN010118/APP/5.8]</b> .
18	Consulting the community - Collection of responses	The questionnaire will be made available by direct mail to people living in consultation zone 1, online through the proposed Longfield Solar Farm website, and on request.	The Applicant sent a copy of the consultation questionnaire to all addresses in consultation zone 1, made it available at the consultation website, and provided hard copies on request.
19	Consulting the community - Seldom heard audiences	Hold webinars at a variety of times, including evenings and weekends, to enable participation by people with different time commitments and making recordings of webinars available afterwards.	The Applicant held webinars at different times including evenings and weekends and made recordings of the webinars available at the consultation website afterwards. Details of webinars held as part of the consultation as included in <b>Table 6-5 of the Consultation Report [EN010118/APP/5.1]</b> .
19	Consulting the community - Seldom heard audiences	Make provision for people who do not have access to the internet through the consultation programme. This will include sending a copy of the consultation booklet and consultation questionnaire to every address in consultation zone 1, proactively offering meetings by telephone to people living in consultation zone 1 and making hard copies of consultation	The Applicant sent a copy of the consultation booklet along with the consultation questionnaire to all addresses in consultation zone 1. It included details of how to book a one-to-one telephone appointment in the booklet and in consultation advertising. The Applicant also made hard copies of consultation materials available on request.

Page	Section	Commitment	Compliance
		materials available as set out above.	
19	Consulting the community - Seldom heard audiences	Providing materials in alternative formats such as Braille on request. Details of how to request materials in alternative formats will be published at the consultation website and in the consultation booklet.	Consultation materials were available in alternative forms on request. Details of how to request the materials in an alternative were published on the consultation website and in the consultation booklet.
19	Consulting the community - Seldom heard audiences	Contact community and voluntary organisations including schools and parish councils within consultation zone 1 to offer direct engagement and sharing a consultation information pack designed to support them in promoting consultation through their own existing communication channels such as social media feeds.	The Applicant contacted community and voluntary organisations within consultation zone 1 to offer direct engagement and share details of the consultation. These organisations are listed in <b>Appendix H-1 [EN010118/APP/5.9]</b> .
19	Consulting the community - Seldom heard audiences	Provide a variety of communications channels including a Freephone number, email address, and Freepost address for those seeking information.	The Applicant provided a variety of communications channels including the consultation website, a freephone number (0808 168 7925), a freepost address Longfield Solar Farm consultation, FREEPOST reference RTRB-LUJJ-AGBY, c/o SEC Newgate UK Communications, Sky Light City Tower, 50 Basinghall Street, London, EC2V 5DE) or email. These details were

Page	Section	Commitment	Compliance
			included in all consultation materials.
9	Consultation information - How to take part in the consultation	The statutory public consultation for Longfield Solar Farm will take place no earlier than 20 May 2021.	The statutory public consultation for Longfield Solar Farm took place between Tuesday 1 June 2021 – Tuesday 13 July 2021.
21	Consultation information - How to take part in the consultation	Hold webinars at the following times and dates: <ul style="list-style-type: none"> <li>- 14:00 on Saturday 5 June 2021;</li> <li>- 19:00 on Thursday 10 June 2021.</li> </ul>	The Applicant held webinars at these times and dates as set out in <b>Table 6-5</b> of the <b>Consultation Report [EN010118/APP/5.1]</b> .
21	Consultation information - How to take part in the consultation	Viewing a virtual public exhibition on the consultation website which will be available to view at any time between the beginning and end of the consultation period.	The Applicant hosted a virtual public exhibition on the consultation website for the duration of the consultation period (until the end of the consultation period, 13 July 2021).
21	Consultation information - How to take part in the consultation	Make it possible to book appointments to speak with members of the project team about our proposals individually using the contact details provided in the SoCC.	The Applicant invited consultees to book an individual appointment to discuss the Scheme by telephone, providing an opportunity for those without access to the internet to ask questions. Details of how to book an appointment were included in the consultation booklet and consultation advertising.
14-6	Consultation information - How to take	Send a copy of the booklet to all addresses in consultation zone 1. The booklet will also be available from the	The Applicant sent a copy of the consultation booklet to all addresses in consultation

Page	Section	Commitment	Compliance
	part in the consultation	consultation website and on request.	zone 1 at the start of the consultation period
21	Consultation information - How to take part in the consultation	Make the PEIR and other consultation documents available at the consultation website. A charge of £0.35 per page will be applicable for hard copies of the PEIR and its non-technical summary.	The PEIR and other consultation documents were made available at the consultation website. In addition, the Applicant identified the opportunity to provide a hard copy of the PEIR for residents to access during the consultation period at Hatfield Peverel Library, The St, Hatfield Peverel, Chelmsford CM3 2DP; Witham Library, 18 Newland St, Witham CM8 2AQ; Chelmsford Library, Chelmsford County Hall, Market Road, Chelmsford CM1 1QH; St John's Church Little Leighs, Church Lane, Little Leighs, Chelmsford CM3 1PQ. The Applicant also made hard copies of the consultation booklet, questionnaire, and other consultation materials available on request.
21	Consultation information - How to take part in the consultation	All the consultation materials and the consultation questionnaire will be made available on the consultation website. Hard copies of consultation materials will be made available on request.	Copies of all consultation information were made available for review free of charge online at the consultation website. While public deposit points were not included in the SoCC, the Applicant also made hard copies of the consultation booklet, questionnaire, and other consultation materials available on request.

Page	Section	Commitment	Compliance
22	Consultation information - How we will consider the responses	Our DCO application will include a Consultation Report setting out how we have had regard to all responses received.	The DCO application includes this Consultation Report which sets out the regard had to responses received <b>[EN010118/APP/5.1]</b> .